



Welcome to

**HS DC SOUTH DOWNS**

"The three years I spent at South Downs College helped me discover what I truly wanted to do... I have ended with a scholarship at the University of Cambridge!"

Graduated student

**State School**

# South Downs College Hampshire, UK

State sixth form college in Hampshire offering a broad mix of A Levels, vocational pathways and technical courses, with a strong focus on progression to university and employment. The school is best suited to students who want academic choice, practical learning options, and structured preparation for UK higher education.



STATE



SPORTS



ARTS



STEM



CITY

## Quick Facts

**Founded:** 2017

**Ofsted rating:** Good

**Climate:** Cool winters and Warm summers

**Total students:** 5,000 across HSDC campuses

**Accepting students:** Age 16-18

**Programme duration:** Term, Semester, Academic Year

**Visa information:**

- Term/Semester – ETA or Visitor Visa (nationality dependent)
- Academic Year – Student Visa required

**Diploma year offered:** No

**Interview required:** Yes

**English as Second Language (ESL) support:** Yes

## Academic Excellence

South Downs College is part of HSDC, one of the largest further education providers in the South of England. The college offers a wide range of A Levels, GCSE resits and vocational qualifications designed to meet diverse academic goals. Academic provision is supported by specialist teaching teams and strong progression planning, with clear pathways to Russell Group universities, other UK higher education institutions, apprenticeships and employment. Students benefit from opportunities such as the Extended Project Qualification (EPQ) and structured academic support programmes aimed at competitive university entry. Ofsted recognises the college for high-quality education aligned with regional and national skills needs.

## Student Accomplishments

- Students progressing to leading UK universities
- Strong outcomes across academic and vocational pathways
- National and regional success through elite sports programmes.

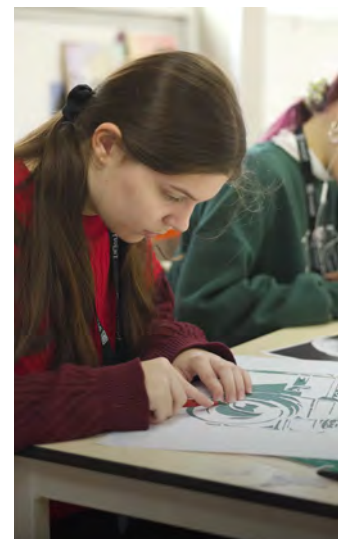
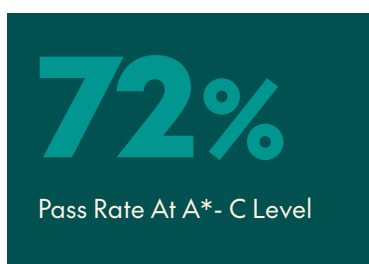
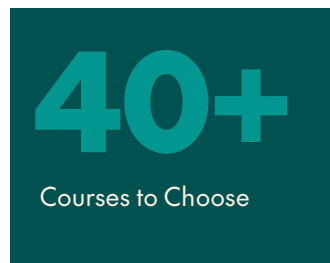
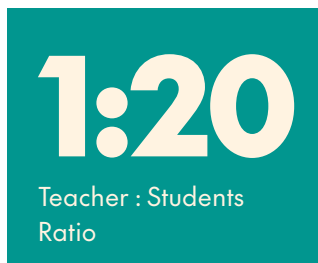


## Recent University Acceptances

- King's College London
- University College London
- University of Bath
- University of Brighton
- University of Bristol
- University of Cambridge
- University of Exeter
- University of Leeds
- University of Nottingham
- University of Oxford
- University of Portsmouth
- University of Reading
- University of Southampton
- University of Sussex
- University of Warwick



## Stats



## Campus Facilities

The South Downs campus provides dedicated spaces for academic study, science, engineering, creative arts and sport. Facilities include science laboratories, engineering workshops, IT suites, creative studios, rehearsal spaces, sports halls and outdoor pitches. Students also have access to learning resource centres, quiet study areas and social spaces designed for sixth form learners. Facilities support both exam-based subjects and practical, career-focused programmes.

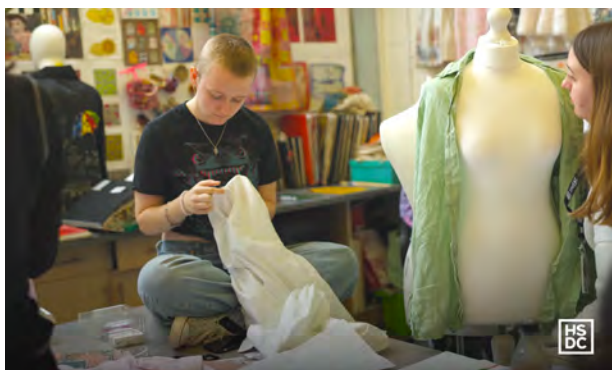
## Life with local host families

International students live with carefully selected local host families in the Hampshire area. Accommodation typically includes a single or shared bedroom, daily meals and a supportive home environment. Students commute to campus by public transport, allowing them to experience everyday British life while maintaining a structured routine. Pastoral support and regular check-ins help students integrate socially and academically. Family First placement is available.

## Athletics and Arts

The college offers a broad sports programme that supports both recreational participation and competitive development. Students can take part in team and individual sports through curriculum courses and extracurricular activities, using on-site sports halls, fitness spaces, and outdoor pitches. Opportunities focus on skill development, teamwork, and physical wellbeing.

Arts provision covers visual, performing, and creative subjects, with dedicated spaces for studio work, rehearsal, and performance. Students engage in art, design, media, music, and drama through structured courses and clubs, with regular showcases and projects that support portfolio building and progression to further study.



## Lists

**Sports:** Football, basketball, netball, rugby, fitness training, athletics, indoor sports, sports science-related activities

**Arts:** Fine Art, Photography, Graphic Design, 3D Design, Film Studies, Media, Dance, Drama and Theatre Studies, Music-related performance and production activities

**Languages offered:**  
French, Spanish, German

**Subjects offered:**

- **BTEC / Vocational:** Accounting, Acting for Stage & Screen, Applied Psychology, Art & Design, Beauty Therapy, Business, Construction, Creative Media Production, Criminology & Law, Dance, Performance & Choreography, Design & Clothing, Digital Games Design & Development, Engineering, Esports, Fashion, Film & TV Production, Fitness & Performance, Football Performance and Coaching, Forensic Science & Criminal Investigation, Hairdressing & Make-up Artistry, Healthy & Social Care, Hospitality & Catering, International Logistics, Journalism & Digital Communications, Music Production, Music Technology, Musical Theatre, Outdoor Adventure, Performing Arts & Dance, Personal Training for Health, Photography & Graphic Design, Popular Music Performance, Sport, Sport Coaching & PE Teaching, Sport Science & Therapy, Travel & Tourism

**Clubs and Extracurriculars:**

Student Union, Debating, Model United Nations, Sports clubs, Performing arts groups, Creative clubs, Academic societies, Volunteering, Careers and employability workshops, University preparation programmes

## Community

South Downs College is located in Hampshire in the South of England, within a semi-rural setting close to coastal areas and major transport links. The campus is approximately 90 minutes from London, offering access to cultural attractions, museums and universities. The surrounding area provides a safe environment with access to countryside, walking routes and nearby coastal towns, giving students a balanced study and lifestyle experience.

## Climate in Plymouth, Devon

Mild southern climate with cool winters and warm summers. Average temperatures range from 3°C in January to 21°C in July, with moderate rainfall throughout the year.



[Click to view community](#)



Video

**Discover  
Your Future  
at HSDC**

