



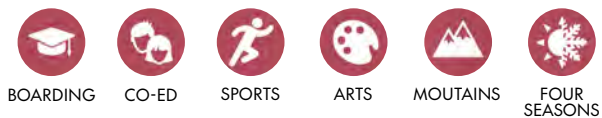
"I always knew art would be a part of my life and Lyndon Institute helped shape that for me."

- Ellen Tierney, Alumni.

Boarding School

Lyndon Institute Vermont

Lyndon Institute is an independent boarding high school in rural Vermont offering strong college-preparatory academics, Advanced Placement courses, and extensive career and technical education pathways. Its distinctive model combines rigorous academics with hands-on learning, January Term immersion, and early college opportunities through dual enrollment.



BOARDING CO-ED SPORTS ARTS MOUNTAINS FOUR SEASONS

Quick Facts

Founded: 1867
Students: Co-educational
Niche.com Rank: A+
Accepting students: Grades 9-12th
University Acceptance Rate: 99%
Total School Enrollment: 500

Interview Required? Yes
Diploma Year? Yes
English as Second Language (ESL) support: Yes
Climate: Warm summers and Cold winters
Special Programs: Productive Learning Model, Vail Scholars, Career & Technical Education (CTE)

Academic Excellence

Lyndon Institute offers a comprehensive college-preparatory curriculum with more than 150 courses, including Advanced Placement, honors, and dual enrollment options. Students can earn college credit through partnerships with Vermont State University and the Community College of Vermont. The school maintains small class size, supporting individualized instruction and academic advising. Specialized diploma endorsements are available in Honors College Preparation, Fine and Performing Arts, and Career and Technical Education. A signature January Term allows students to engage in intensive study or internships. Graduates attend a wide range of competitive U.S. colleges and universities.

Student Accomplishments

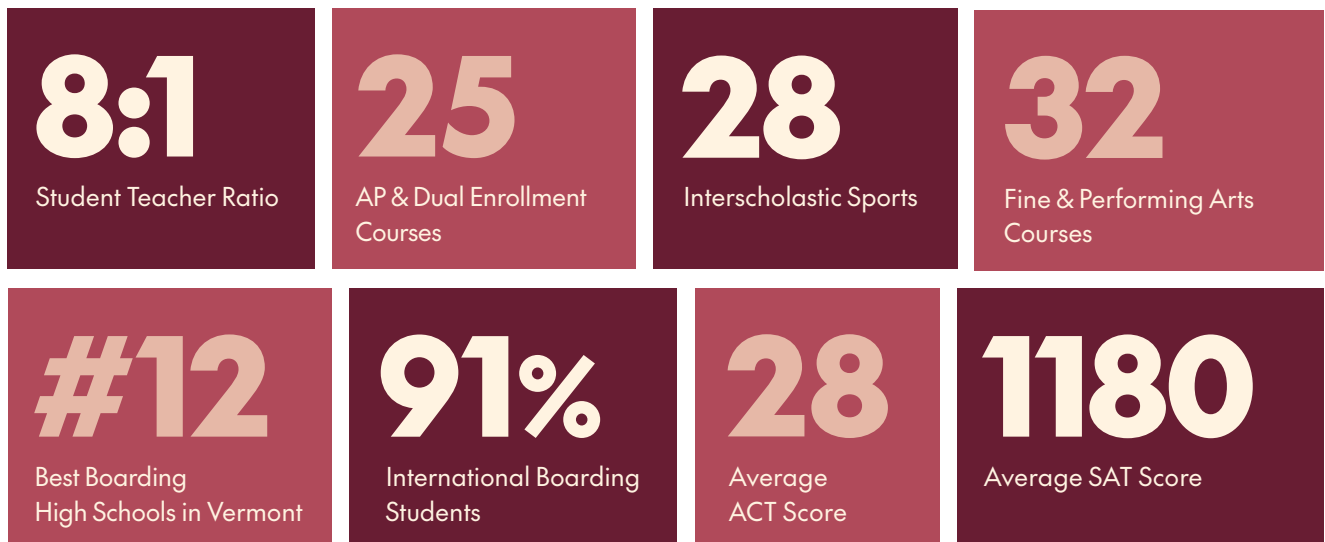
- AP Scholars recognized annually
- Students earn industry-recognized credentials through career and technical programs
- State championship titles across multiple varsity sports
- Acceptance to competitive four-year universities and technical colleges.

Recent University Acceptances

- Bentley University
- Bucknell University
- Colgate University
- Dartmouth College
- Emory University
- Lehigh University
- Middlebury College
- Purdue University
- School of Art Institute of Chicago
- Smith College
- Syracuse University
- University of British Columbia
- University of California - Berkeley
- University of California - Irvine
- University of California – San Diego
- University of California – Santa Barbara
- University of Florida
- University of Vermont
- University of Wisconsin



Stats



Campus Facilities

Lyndon Institute occupies a large rural campus in Vermont's Northeast Kingdom, surrounded by forests and open land. Facilities support academic, arts, athletic, and technical programs, with dedicated spaces for science labs, visual and performing arts, and career training. Outdoor areas are used for recreation, athletics, and environmental studies, reinforcing experiential learning and connection to the natural environment.

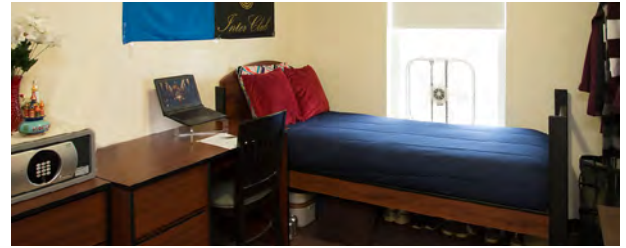
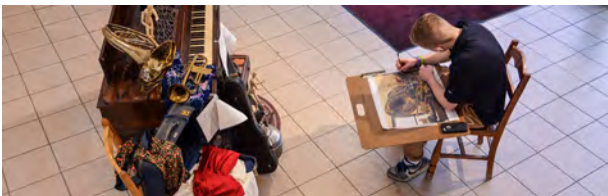
Residential Life

Lyndon Institute offers on-campus boarding for domestic and international students. Residential housing provides structured supervision, shared student spaces, and access to dining services. Boarding students come from across the United States and multiple countries, creating a diverse residential community integrated with academic and extracurricular life.

Athletics and Arts

Athletics play a central role at Lyndon Institute, with a long tradition of competitive teams and broad student participation. The school fields numerous varsity and junior varsity teams and has earned multiple state championships.

Lyndon Institute offers extensive visual and performing arts programming, supporting both college preparation and professional training pathways. Students can pursue coursework in music, theater, dance, and visual arts, including Advanced Placement options.



Lists

Sports: Alpine skiing, Baseball, Basketball, Cross country, Golf, Nordic skiing, Soccer, Softball, Track and field, Volleyball, Wrestling

Arts: Acting, Chorus, Dance, Digital Photography, Drawing, Graphic Arts, Jazz Band, Music Production, Painting, Stage Band, Studio Art, Theater Production

Languages:
French, Spanish

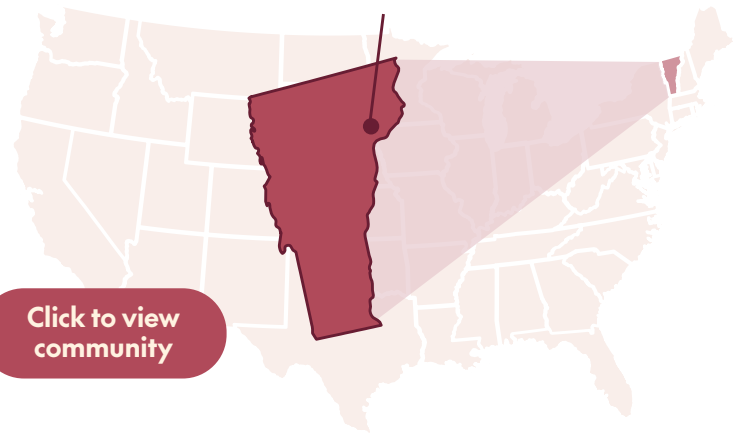
AP Courses Offered:
Chemistry, English Language and Composition, English Literature and Composition, European History, Music Theory, Physics 1, Physics 2, Studio Art, United States History

Tech and Innovation Courses:
Graphic Arts, Music Production, Digital Photography

Club and Extracurriculars
Biking Vikings, Construction Trades Club, Dance Club, Drama Club, Environmental Club, Future Business Leaders of America (FBLA), Justice, Equity, Diversity & Inclusion (JEDI), Model United Nations, Music Jamming Club, National Honor Society, National Technical Honor Society, Outing Club, Scholars Bowl, School Newspaper, Science Club, SkillsUSA, Student Council, Sustainability Club, Viking Botsters (Robotics), Writers Workshop

Community

Lyndon Institute is located in Lyndon Center in Vermont's Northeast Kingdom, a rural region known for natural scenery and outdoor recreation. The area is approximately one hour from Burlington and within driving distance of Montréal. Students have access to nearby ski resorts, hiking trails, and community cultural events. The setting provides a quiet, safe environment suited to focused study and outdoor activities.



Climate in Lyndon Center, Vermont

Cold winters with significant snowfall and mild summers.



Video
Welcome to
Lyndon Institute

